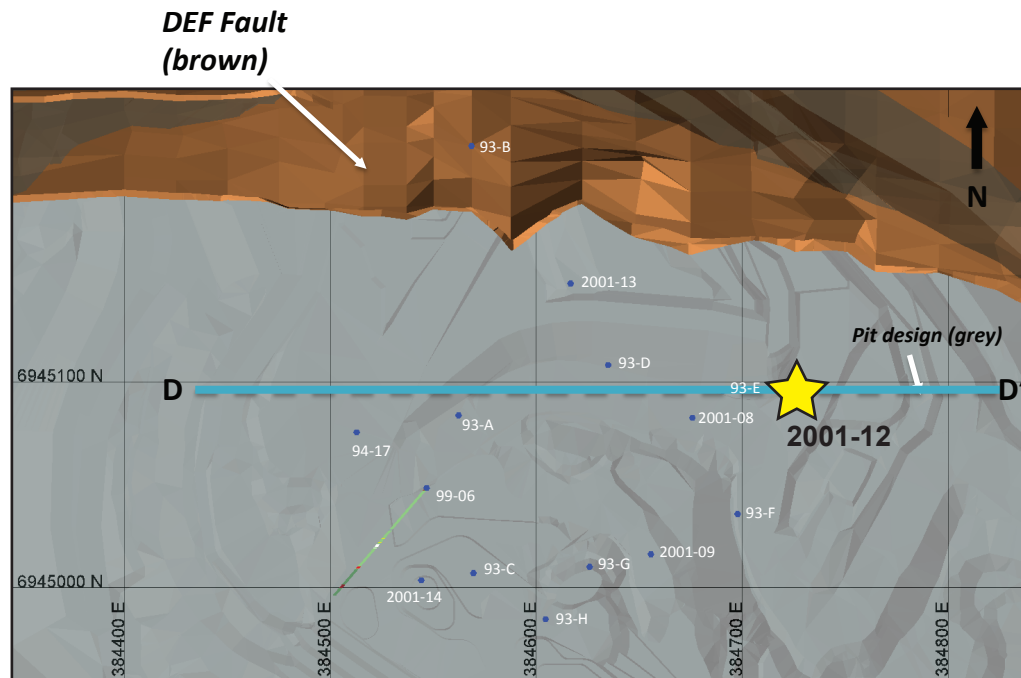


Minto deposit (Yukon MINFILE 115I 021, 022)

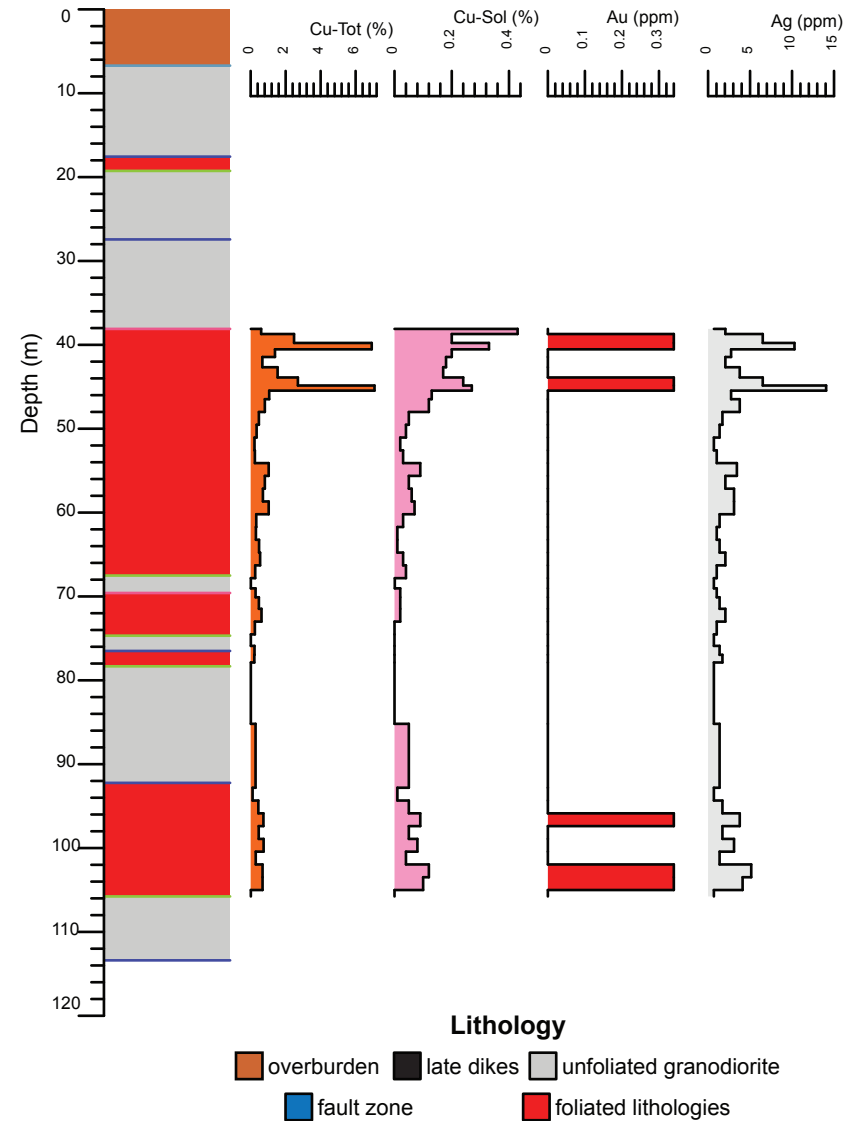
Drill Hole: 2001-12, Minto Main deposit

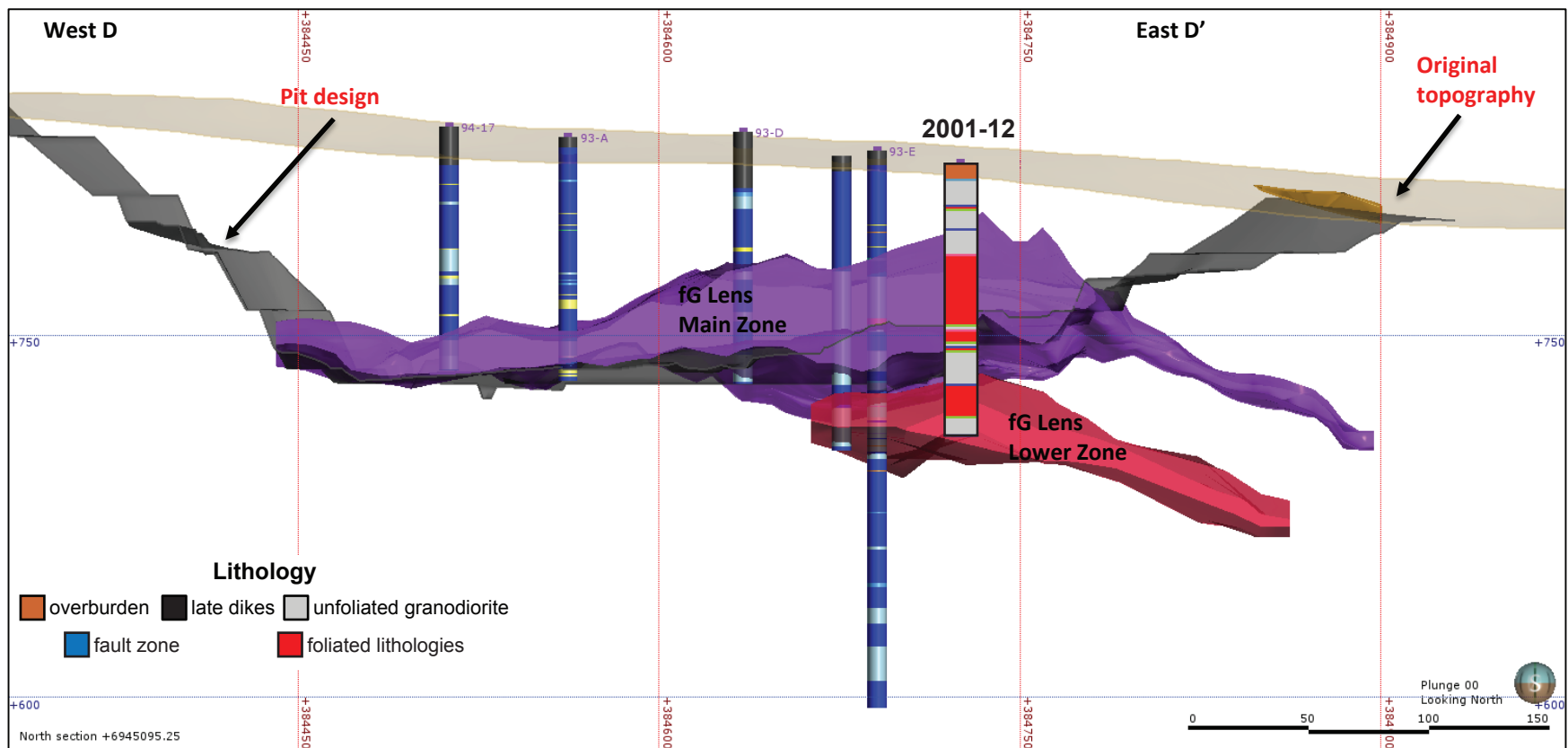
Area	Hole No.	Azimuth	Dip	Length (m)	Collar coordinates (NAD83, Zn 8)
Minto Main	2001-12	0	-90	113.39	384725mE, 6945094mN



Above: Orthophoto of Minto area. Collar location of 2001-12 shown by yellow star, blue circles show collar locations of other drill holes in YGS collection.

Right: Simplified strip log with selected assays.





Above: Simplified vertical east-west cross-section through the Minto Main pit.

Right: Selected assays through Minto Main zone. Cu - Tot = sulphide and non-sulphide copper, Cu-Sol = non-sulphide copper

Hole	From (m)	To (m)	Interval (m)	Sample	Cu (%)	Cu-Sol (%)	Au (ppm)	Ag (ppm)
2001-12	38.1	39.32	1.22	27174	0.6	0.4	0.0	2.1
2001-12	39.32	40.23	0.91	27175	2.5	0.2	0.3	6.5
2001-12	40.23	40.84	0.61	27176	6.9	0.3	0.3	10.3
2001-12	40.84	42.06	1.22	27177	1.4	0.2	0.0	2.7
2001-12	42.06	43.28	1.22	27178	0.7	0.2	0.0	2.1
2001-12	43.28	44.5	1.22	27179	1.5	0.2	0.0	3.8
2001-12	44.5	45.2	0.7	27180	2.7	0.2	0.3	6.5
2001-12	45.2	45.72	0.52	27181	7.1	0.3	0.3	14.1
2001-12	45.72	47.24	1.52	27185	1.1	0.1	0.0	2.7
2001-12	47.24	48.77	1.53	27186	0.8	0.1	0.0	3.8
2001-12	48.77	50.29	1.52	27187	0.5	0.1	0.0	1.7